

Bloom School Olympiads

Bloom Science Olympiad (BSO)

Class 2nd

Question Paper 2022

Student Name _____

Mobile No.

--	--	--	--	--	--	--	--	--	--

Total Questions : 35

Time : 60 min.

Instructions

1. Additional 10 min. will be given to students to fill up the student's information before the start of the exam.
2. All questions are compulsory and each question carries 1 mark. Use of calculator is not allowed.
3. Write and circle your Mobile Number and Subject clearly on the Answer sheet and do not forget to sign.
4. There is only one correct answer hence mark one choice only.
5. Darken your choice with HB Pencil or Blue/Black Ball Point Pen only.

For example

Indira Gandhi International Airport, is situated in which city?

- (a) New Delhi (b) Mumbai
(c) Chennai (d) Hyderabad

20: ● (b) (c) (d)

As the correct answer is (a), the student should darken the circle corresponding to option (a)

6. Rough work should be done in the blank space provided in the booklet
7. Return the answer sheet to the exam in-charge teacher at the end of the exam.

DO NOT OPEN THIS BOOKLET UNTIL YOU ARE ASKED TO DO SO

Bloom Science Olympiad Class 2

- Which part of the plant absorbs water and mineral for the growth of plant?
(a) Leaves (b) Stem (c) Branches (d) Root
- make honey from the juice of flowers.



- Butterfly
 - Silkworm
 - Flies
 - Bees
- Food is necessary for us because
(a) food helps us to grow.
(b) food gives us energy.
(c) food keeps us healthy.
(d) All options are correct.
 - The main aim of giving first aid is to
(a) save lives.
(b) keep the person comfortable till medical help arrives.
(c) Both (a) and (b)
(d) None of the above
 - A butterfly with some flowers is placed in a glass jar and tightly closed with a lid. The butterfly died because there is no in the glass jar.
(a) air (b) water (c) light (d) food
 - Write True(T) or False(F).
I. Food helps us to grow.
II. We see with our ears.
III. We feel things with our skin.

Codes

	I	II	III
(a)	T	T	T
(c)	T	F	T

	I	II	III
(b)	T	F	F
(d)	F	T	T

- Read the clue and name the house.
A foldable house which is used by nomads.
(a) Caravan (b) A hut
(c) A tent house (d) A cottage

8. Which of these characteristics is shown by both living and non-living things?
 (a) Growth (b) Reproduction (c) Breathing (d) Weight
9. The animal which carries his young one in a pouch and is found in Australia, is
 (a) panda (b) polar bear (c) kangaroo (d) penguin
10.are known as gateways of knowledge.
 (a) Sense organs (b) Excretory organ (c) Hands (d) Blood vessels
11. We should not touch electric switches with



- (a) dry hands (b) bare hands
 (c) wet hands (d) left hand
12. Mostly plants inhale present in the atmosphere.
 (a) carbon dioxide (b) oxygen
 (c) nitrogen (d) hydrogen
13. The two organs located in our chest are
 (a) stomach, intestine (b) heart, stomach
 (c) heart, lungs (d) lungs, stomach
14. We wear cotton and light colour clothes in summer as
 (a) they keep our body warm (b) they absorb heat
 (c) they keep our body cool (d) do not absorb sweat
15. Which one of the following refers to non-living things?
 (a) Fan, kite, bird (b) Table, chair, child
 (c) Clouds, rivers, mountains (d) Rivers, birds, trees
16. Leather is used to make bags, shoes, purses, belts, wallets, jackets and so on. It is made from the of animals.



- (a) teeth (b) wool (c) skin (d) dung

17. Eating nuts are very healthy because nuts gives us lot of







- (a) vitamins (b) minerals (c) roughage (d) energy

18. What type of clothes should we wear while lighting crackers?

- (a) Polyester (b) Nylon (c) Cotton (d) Terylene

19. Match the following columns.

Column I	Column II
A.  Bamboos	(i) To make medicine
B.  Tulsi	(ii) To make sugar
C.  Jasmine	(iii) To make furniture
D.  Sugarcane	(iv) To make perfumes

Codes

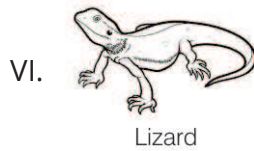
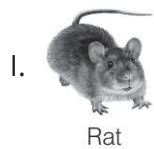
A	B	C	D	A	B	C	D
(a) (ii)	(i)	(iii)	(iv)	(b) (iii)	(i)	(iv)	(ii)
(c) (i)	(iii)	(iv)	(ii)	(d) (i)	(ii)	(iv)	(iii)

20. Choose the correct statement with respect to the given figure.



- (a) I pump blood to all parts of your body.
 (b) I clean the blood.
 (c) I digest the food.
 (d) I help in taking oxygen.

21. We share our homes with some unwanted visitors. These animals are not our pet. So, who are they? Take the help of picture.



- (a) Friends (b) Pests (c) Utensils (d) All of these

22. The picture shows the parent with their young ones. What quality is depicted by them?



- (a) Move (b) Grow
(c) Need food (d) Reproduce

23. Give two examples of animals who eat only plants.

- (a) Cow, goat (b) Cow, tiger
(c) Deer, frog (d) Dolphin, rabbit

24. Match the following columns .

Column I	Column II
A. Energy giving food	(i) Fruits and vegetables
B. Roadside food	(ii) Spicy fried potatoes
C. Meals	(iii) Rice and bread
D. Healthy food	(iv) Three in a day
E. Oily food	(v) Covered with dust and flies

Codes

A	B	C	D	E	A	B	C	D	E
(a) (iii)	(v)	(iv)	(i)	(ii)	(b) (ii)	(i)	(iii)	(v)	(iv)
(c) (iii)	(v)	(ii)	(i)	(iv)	(d) (ii)	(iii)	(iv)	(i)	(v)

25. Why do we empty the room coolers which are not being used?
- The water starts smelling bad.
 - Mosquitoes may start growing in the water and cause malaria.
 - The water will become hot.
 - Cockroaches will start living in the water.

26. Fill the correct options in the given blanks.

- Plant grows from..... .
- The fruit grows from the
- Buds grow on the

Codes

I	II	III
(a) roots	seed	leaves
(b) roots	seed	stem
(c) seed	flower	stem
(d) seed	leaves	branches

27. Which of the following part is paired in our body?
- Eyes
 - Ears
 - Legs
 - All of these
28. People living in house boats move in and out of their houses in
- caravans
 - tents
 - shikaras
 - igloo
29. Look at the picture carefully and choose the correct option.



A seed is a living thing because

- it grows into a plant.
 - it does not breathe.
 - it does not move.
 - it does not grow.
30. There are some domestic animals names are hidden in this word puzzle. Find them and answer the question that follows.

M	L	T	U	J	K	O	C	O	W
B	F	B	U	F	F	A	L	O	X
U	N	I	M	F	O	N	D	W	E
F	I	H	G	O	A	T	R	S	T
I	A	R	P	G	N	C	O	X	K
T	S	Q	B	T	L	U	M	J	Y

How many words are there in the box?

(a) 7

(b) 4

(c) 8

(d) 6

31. Mummy says us to eat green vegetables like spinach because they are

(a) protective foods

(b) body building foods

(c) energy giving foods

(d) None of these

32. Choose the correct options.

We should not talk on mobile

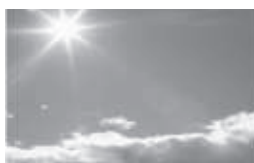
(a) while watching movie

(b) when in a metro

(c) while driving

(d) when on the footpath

33. Look at the pictures and tell which of the following statements are correct?



I



II

I. Plants make the air clean and fresh.

II. Plants give shadows.

Codes

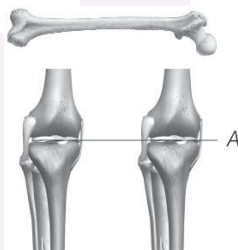
(a) Only I is correct.

(b) Only II is incorrect.

(c) I and II are correct.

(d) I and II are not correct.

34. Mark the place A in the given figure.



The A is a place in a human body where two bones meet.

(a) bone

(b) knee

(c) posture

(d) joint

35. Nylon ropes are widely available, nylon is



Nylon ropes

(a) a kind of natural cotton

(b) a kind of natural silk

(c) man-made fibre

(d) All of these

ANSWER KEY

Science Class 2nd

1.	(d)	19.	(b)
2.	(d)	20.	(c)
3.	(d)	21.	(b)
4.	(c)	22.	(d)
5.	(a)	23.	(a)
6.	(c)	24.	(a)
7.	(c)	25.	(b)
8.	(d)	26.	(c)
9.	(c)	27.	(d)
10.	(a)	28.	(c)
11.	(c)	29.	(a)
12.	(a)	30.	(b)
13.	(c)	31.	(a)
14.	(c)	32.	(c)
15.	(c)	33.	(c)
16.	(c)	34.	(d)
17.	(d)	35.	(c)
18.	(c)		

BMO

Bloom
Maths
Olympiad

BSO

Bloom
Science
Olympiad

BEO

Bloom
English
Olympiad

BGO

Bloom
GK
Olympiad

BRO

Bloom
Reasoning
Olympiad

India's BIGGEST Olympiads

BLOOM SCHOOL OLYMPIADS

CLASS 1-12

(In English & Hindi Medium)

Class
1-10

- Bloom Maths Olympiad (BMO)*
- Bloom Science Olympiad (BSO)*
- Bloom Social Studies Olympiad (BSSO)
- Bloom English Olympiad (BEO)
- Bloom Hindi Olympiad (BHO)
- Bloom GK Olympiad (BGO)*
- Bloom Reasoning Olympiad (BRO)
- Bloom Computer Olympiad (BCO)

Class
11-12

- Bloom Maths Olympiad (BMO)*
- Bloom Physics Olympiad (BPhO)*
- Bloom Chemistry Olympiad (BChO)*
- Bloom Biology Olympiad (BBiO)*
- Bloom English Olympiad (BEO)
- Bloom Reas. & Apt Olympiad (BRAO)
- Bloom History Olympiad (BHiO)
- Bloom Geography Olympiad (BGeO)
- Bloom Political Science Olympiad (BPSO)
- Bloom Commerce Olympiad (BCoO)
- Bloom Accounts Olympiad (BAcO)
- Bloom Economics Olympiad (BEcO)
- Bloom Computer Olympiad (BCO)

*** Available in Hindi Medium also**



Win

- Trophies
- Medals
- Certificates



Get Free with Registration

- Online Mock Tests
- Sample Papers
- Past Years' Question Papers

Registration Fee : **For Classes 1-10 ₹175** **For Classes 11-12 ₹225**

Get Best Practice for Olympiads...

Bloom Olympiads Online Test Packages

Mathematics
Olympiad

Test Package

Science
Olympiad

Test Package

English
Olympiad

Test Package

Reasoning
Olympiad

Test Package

GK
Olympiad

Test Package

For Classes
1-10

- Chapterwise Practice Questions
- 10 Full Syllabus Practice Sets

- Detailed Solutions
- Comprehensive Analysis

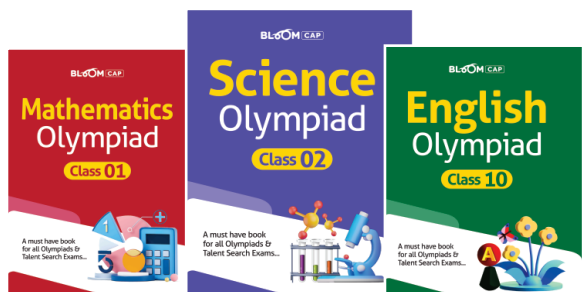
Inaugural
Price

~~₹250~~

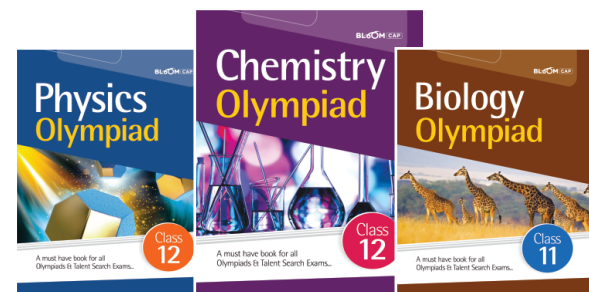
₹200

Bloom Olympiad Books

19 Subjects in
English & Hindi



Classes 1-10 ₹125 Each



Classes 11-12 ₹175 Each